

Reusable SAFE-LOCK I/A Coaxial System



Distributed in New Zealand by:

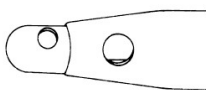


Cooper Medical Limited
57 Mahunga Drive
Mangere Bridge
Auckland 2022

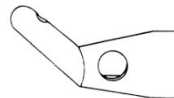
Product Features:

- Standard Luer-connector allows you to adapt to your existing Phaco or I/A system
- Tips manufactured with high-precision are designed to keep up with your changing intraoperative needs, from the capsulorhexis to cortical clean-up, to the most difficult 12 o'clock cortex removal
- Universal connector allows you to use your preferred cannulas with the same Handpiece
- Tips have a 16G (1.60mm O.D.) outer sleeve with dual 0.90 mm irrigation side ports and 21G (0.8 mm O.D.) inner cannula with 0.35 mm aspirating port. Other sizes available upon request.
- Swiss design / Swiss Made

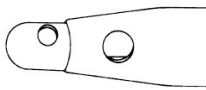
Some product forms of the SL-family



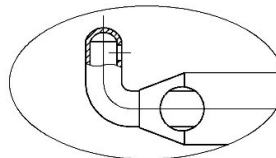
SL 110
Straight Tip for standard aspiration procedures with 0.35 mm aspirating port



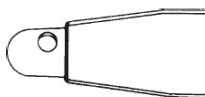
SL 120
Angled 45° Tip for peripheral cortex removal



SL 115
Straight Tip e.g. for removal of viscoelastic fluids with 0.50 mm aspirating port



SL 130
Angled 90° Tip for peripheral and superior cortex removal



SL 116
SI-Sleeve Tip straight, without soft style Si-sleeve



SL 140
Curved Tip for initial cortex Removal

About Bürki
Bürki plans, develops and produces
microsurgical instruments in SWISS QUALITY
EN ISO 13485

Bürki inno med AG
Industriestrasse 67
9443 Widnau
Switzerland

Tel +41 (0)71 744 88 66
info@buerki.eu
www.buerki.eu



SL 195
O-Ring Set replacement set
(pack of 15 pieces)

IMPORTANT INFORMATION:
Replace O-rings after every 10th reesterilisation



SL 100 I/A
Handpiece ergonomic handle

Entire List of SL-family

SL 100	I/A Handpiece disassembling; coaxial / monomanual	SL 119 a11	Angled 30° Si-Sleeve Tip 22G (0.70mm); Asp. Port 0.30mm
SL 110	Straight Tip for standard aspiration; 16G (1.6mm), Asp. Port 0.35mm	SL 119 a12	Angled 30° Sleeve Tip 21G (0.80mm); Asp. Port 0.30mm
SL 110/0.3	Straight Tip 16G (1.6mm) for standard aspiration; Asp. port 0.30	SL 119 a13	Angled 30° Si-Sleeve Tip 20G (0.90mm); Asp. Port 0.30mm
SL 115	Straight Tip 16G (1.6mm) for removal of viscoelastic fluid, Asp. Port 0.50mm	SL 119 a14	Angled 30° Si-Sleeve Tip D1.0mm; Asp. Port 0.30mm
SL 116	Straight Si-Sleeve Tip D1.0mm, Asp. Port 0.35mm	SL 119 a21	Angled 45° Si-Sleeve Tip 22G (0.70mm); Asp. Port 0.30mm,
SL 116 s1	Straight Si-Sleeve Tip 21G (0.80mm); Asp. Port 0.30mm	SL 119 a22	Angled 45° Si-Sleeve Tip 21G (0.80mm); Asp. Port 0.30mm
SL 116 s2	Straight Si-Sleeve Tip 21G (0.80mm); Asp. Port 0.30mm	SL 119 a23	Angled 45° Si-Sleeve Tip 20G (0.90mm); Asp. Port 0.30mm
SL 116 s3	Straight Si-Sleeve Tip 20G (0.90mm); Asp. Port 0.30mm	SL 119 a24	Angled 45° Si-Sleeve Tip D 1.0mm; Asp. Port 0.30mm
SL 116 s4	Straight Si-Sleeve Tip D1.0mm; Asp. Port 0.30mm	SL 120 30°	Tip 30° 16G angled; Asp. Port 0.30mm, for peripheral cortex removal
SL 117	Straight Si-Sleeve Tip 20G (0.90mm); Asp. Port 0.33mm	SL 120 45°	Tip 45° 16G angled; Asp. Port 0.35mm, for peripheral cortex removal
SL 118 c1	Curved Si-Sleeve Tip 22G (0.70mm); Asp. Port 0.30mm	SL 130	Tip 90° 16G angled; Asp. Port 0.35mm, for peripheral cortex removal
SL 118 c2	Curved Si-Sleeve Tip 21G (0.80mm); Asp. Port 0.30mm	SL 140	Curved Tip 16G (inn21G), Asp. Port 0.35mm, for initial cortex removal
SL 118 c3	Curved Si-Sleeve Tip 20G (0.90mm); Asp. Port 0.30mm	SL 195	O-ring set
SL 118 c4	Curved Si-Sleeve Tip D1.0mm; Asp. Port 0.30mm,		
SL 119	Angled Si-Sleeve Tip 45° D1.0mm; Asp. Port 0.35mm		

Version 09/2019

About Bürki
Bürki plans, develops and produces
microsurgical instruments in SWISS QUALITY
EN ISO 13485

Bürki inno med AG
Industriestrasse 67
9443 Widnau
Switzerland

Tel +41 (0)71 744 88 66
info@buerki.eu
www.buerki.eu